



 NAPA COUNTY OFFICE  
OF  
EDUCATION

2021-2024

# Strategic Plan

*Vision*  
and  
*Mission*

An educated, equitable, and thriving community of learners

---

Provide exceptional academic and social-emotional services to children and families, proactive support to educators and community partners, and Innovative leadership for the education community at the local, state and national level.

# NCOE STRATEGIC PRIORITIES

## INCREASE STRATEGIC COLLABORATION

*Establish meaningful relationships to collaboratively address common challenges and leverage resources with and among schools, districts, and NCOE programs*

## SUPPORT MENTAL HEALTH AND WELLNESS

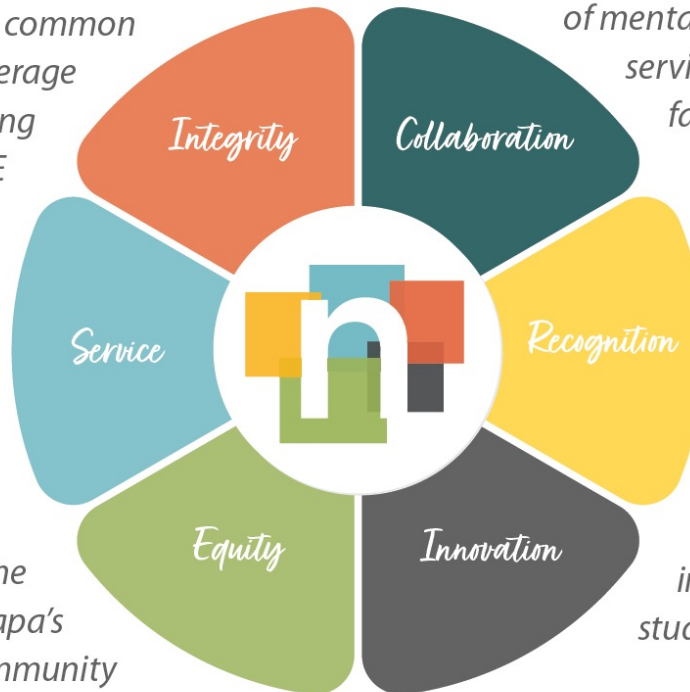
*Provide and/or coordinate an inclusive set of mental health and wellness services for staff, students, and families in a proactive, culturally relevant, and linguistically appropriate manner*

*Develop and implement a responsive, professional learning and coaching structure to support the diverse needs of Napa's education community*

*Implement an improvement approach that utilizes data to improve outcomes for students and families*

## STRENGTHEN LEADERSHIP & PROFESSIONAL LEARNING

## PRACTICE CONTINUOUS IMPROVEMENT



*What do we want to do?*

***Create Meaningful Strategic Collaborations***



# Strategic Priorities

Priority 2

INCREASE STRATEGIC  
COLLABORATION

*What are we doing now?*

## INTERNAL

- Bus. Services (GS, Fiscal, IT, TTSS, JCCS) – Camille Creek construction
- IT/TTSS - tech support for Camille Creek CS and Pope Valley ES
- College & Career/Early Childhood – Students modified toys for children with disabilities
- Safe Schools/GS – Update system for emergency response
- Superintendent/Comms – Internal messaging to increase knowledge
- Topic-specific opportunities for cross-departmental learning

# Strategic Priorities

Priority 2



INCREASE STRATEGIC  
COLLABORATION

## EXTERNAL

*What are we doing now?*

*With Districts and Community Agencies*

- Business Services-Business staff meet regularly to support financial operations
- Community Programs – prevention collaborations with external partners
- Camille Creek – Family Support teams collaborate with community agencies
- Communications – Information sharing on key topics with public/private schools
- College & Career Readiness – Culinary Careers program with local restaurants and work readiness collaborative with education, business, and the public sector
- SELPA – network of districts, family and community agencies come together to support SPED students

# Strategic Priorities

Priority 2

INCREASE STRATEGIC  
COLLABORATION



*How are we going to do it?*

## Priority 2 Committee

- Cataloged collaborative opportunities for a "1 stop shop"
- Developed "Explore NCOE" events for staff to build connections
- Formed cross-department topic area learning groups
- Working on a framework for collaboration with districts and community partners

